

Flush Mount Bezel Kit

for Admiral P3, Commander P2/P2VS and Navigator G2 Heads

Installation Brief



The Flush Mount Bezel Kit provides an attractive way to install your Admiral P3 or Commander P2/P2VS Autopilot System's Control Head, or the Display Head of the Navigator G2, on any flat surface at or around an inside helm station on your vessel.



Parts required

- For Admiral P3, Commander P2 & Navigator G2 Heads, a Flush Mount Bezel/Grey Kit (PN 30110003), consisting of the following parts:

Item	Part Number	Description	Quantity
1	65120008	Flush Mount Gasket	1
2	65610072	Flush Mount Bezel, Grey	1
3	65520010	Flush Mount Brackets	2

- For Commander P2VS Heads, a Flush Mount Bezel/Black Kit (PN 30110022), consisting of the following parts:

Item	Part Number	Description	Quantity
1	65120008	Flush Mount Gasket	1
2	65610079	Flush Mount Bezel, Black	1
3	65520010	Flush Mount Brackets	2

Note: all photos in this document show the grey bezel. The black bezel is identical to the grey, except for colour.

- Bezel Mounting Kit (PN 30110005), consisting of the following parts:

Item	Part Number	Description	Quantity
1	65010002	Lock Washer, M5 size	3
2	65010006	Hex Nut, M5 size	3
3	65020080	Flat Washer M5 size	3
4	65010016	Set-screw, M5 x 30mm	3

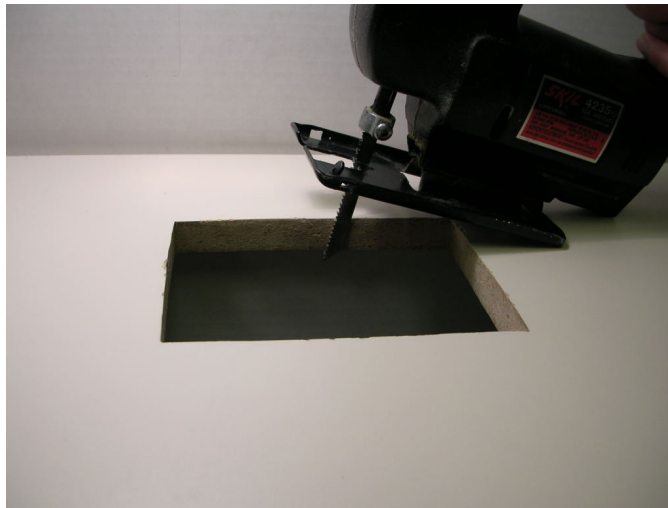
- Admiral P3 Control Head (PN 30110010), Commander P2 (PN 30110007 or 30110008) or P2VS (PN 30110020 or 30110021) Control Head, or Navigator G2 Display Head (PN 30130002 or 30130003).
- Cable Assembly (PN 31110037) for the Admiral P3 or Commander P2/P2VS Control Head, or Cable Assembly (PN 31110048) for the Navigator G2 Display Head.

Procedure

- 1) Choose the location for the Head. Ensure that there is at least 35 mm (1 3/8") of clearance to allow for the cable connection.
- 2) Mark the mounting surface, in the desired location, with the cut-out for the body of the Head; see the dimensions shown on Template Drawing found on the last page of this document. You may find it easier if you create an accurate-scale cutting template using the dimensions shown. Optionally, you can use the inside edge of the Flush Mount Bezel as a guide to marking the cut-out (or as a cross-check on your marks from your own template).



- 3) Using a jig-saw or similar tool, cut out the mounting hole in the panel, as shown below. De-burr the cut-out's edges. If the cut-out was marked using Flush Mount Bezel as a template, you should cut the hole just outside of the marks, so as to allow enough clearance for the Head.



- 4) Install the Flush Mount Bezel on the Head. Slip it over the Head from the front. Press down on the middle of each side, until it snaps into place.

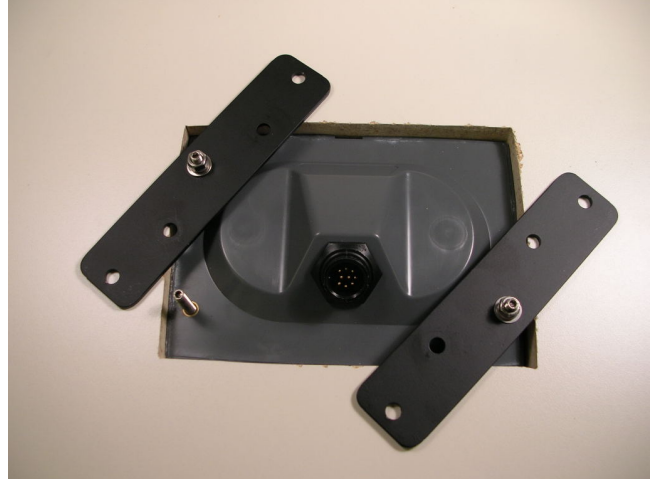


- 5) Check that the Head lies flat on the panel when positioned in the cut-out hole. If necessary, modify the cut-out and/or holes, and smooth the edges, until the Head does lie flat.
- 6) Peel the protective paper off the adhesive backing of the Flush Mount Gasket. Carefully align the gasket to the bezel, and then press down on the gasket so that the adhesive backing sticks to the back of the bezel. Run a finger all along the gasket, to be sure the gasket is firmly & fully glued to the bezel.



- 7) Apply Loctite® 242 (or similar medium-strength, slow-cure, removable thread-lock compound) onto the bottom few threads of the three Set-screws. Thread the screws all the way into the three PEM fasteners embedded in the rear of the Head; tighten the screws in snugly, but do not force them.

- 8) Position the Head in the cut-out from the front, and slide the Flush Mount Brackets over the Set-screws to clamp from behind. The Brackets may be bent depending on panel thickness in order to form an effective clamp. A variety of holes are provided on the clamps to facilitate various configurations, as shown below.



- 9) Secure the Head in place with a flat washer, M5 Lock Washer and M5 Hex Nut on each of the Set-screws, from the back side of the mounting surface. Do not over-tighten the nuts. You may also wish to secure the nuts with some Loctite® 242 applied onto the threads of the screws.



- 10) Attach the Cable to the receptacle on the rear of the Head. To do so, you must align the plug on the end of the cable with the receptacle, push it on, and then turn the outer ring on the plug clockwise until it locks into place – with a slight snap.
- 11) Route the Cable to the Signal Processing Unit (Admiral P3, Commander P2/P2VS), or DU-2 Distribution Box (Navigator G2). See your Installation and Operation Manual for wiring details.

FLUSH-MOUNT TEMPLATE DRAWING (not to scale)
for ADMIRAL P3 or COMMANDER P2/P2VS CONTROL HEADS
or NAVIGATOR G2 DISPLAY HEADS

